



ALKARMA

KAY

WHERE LIFE REVOLVES

Alkarma Kay was inspired by the joy of life! Where you're at the heart of sheikh zayed city and surrounded by everything you would seek and more. we developed a modern boutique compound made up of two clusters on 18 acres of land with only %18 building space. Its 650 units are surrounded by %82 lush greenery and beautiful water features. A vast pool sits between both clusters inviting our trendsetting community to bond and get closer on long summer nights.

AlKarma Kay

Master Plan

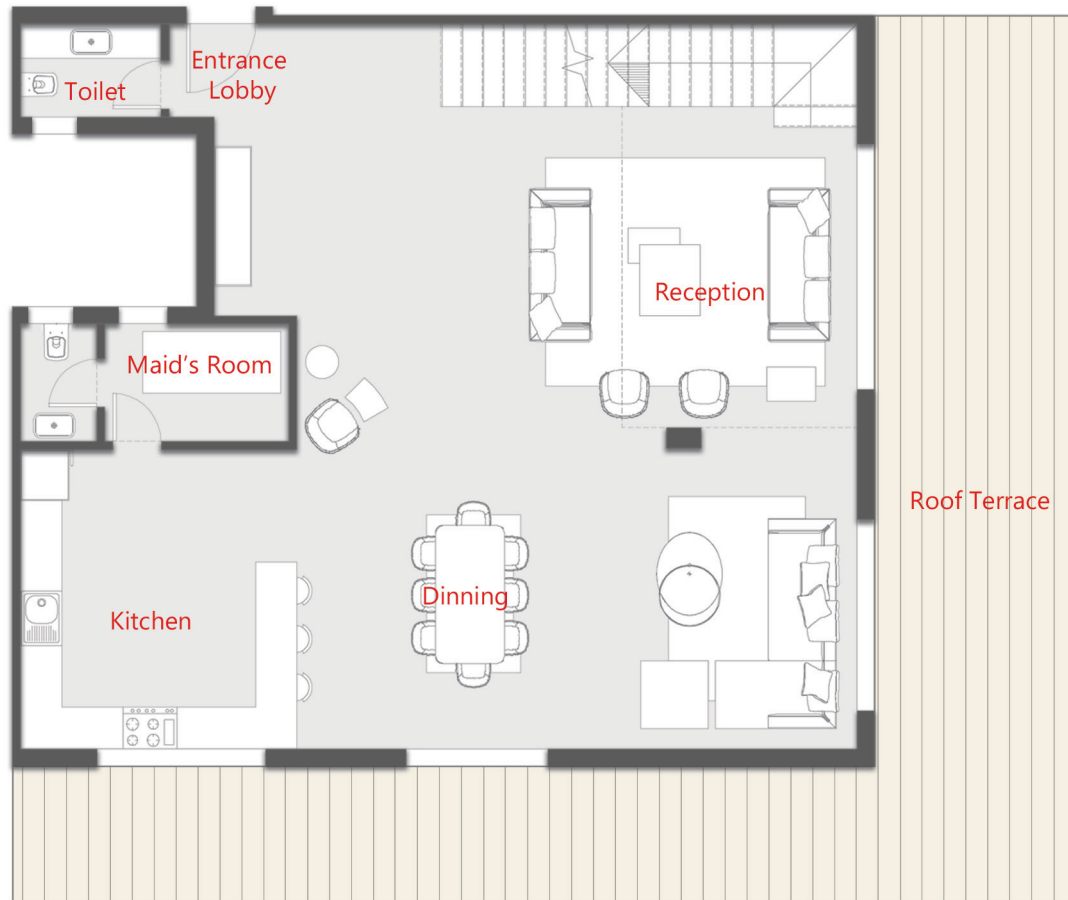


- 2 residential clusters
- Water features in every park
- 1 clubhouse

Disclaimer: Master plan, renders and floor plans are indicative and for illustrative purposes only.

299M2

PENTHOUSE-DUPLEX LEVEL 1



ROOM

DIMENSIONS

RECEPTION / DINING

10.50 X 9.30

KITCHEN

4.35 X 4.00

GUEST TOILET

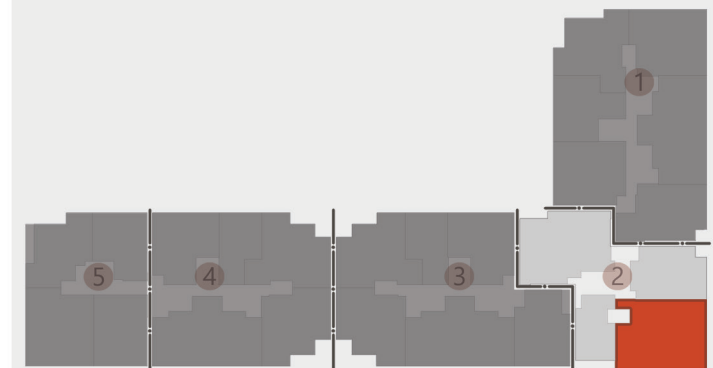
2.05 X 1.35

MAID'S AREA

3.90 X 1.70

ROOF TERRACE

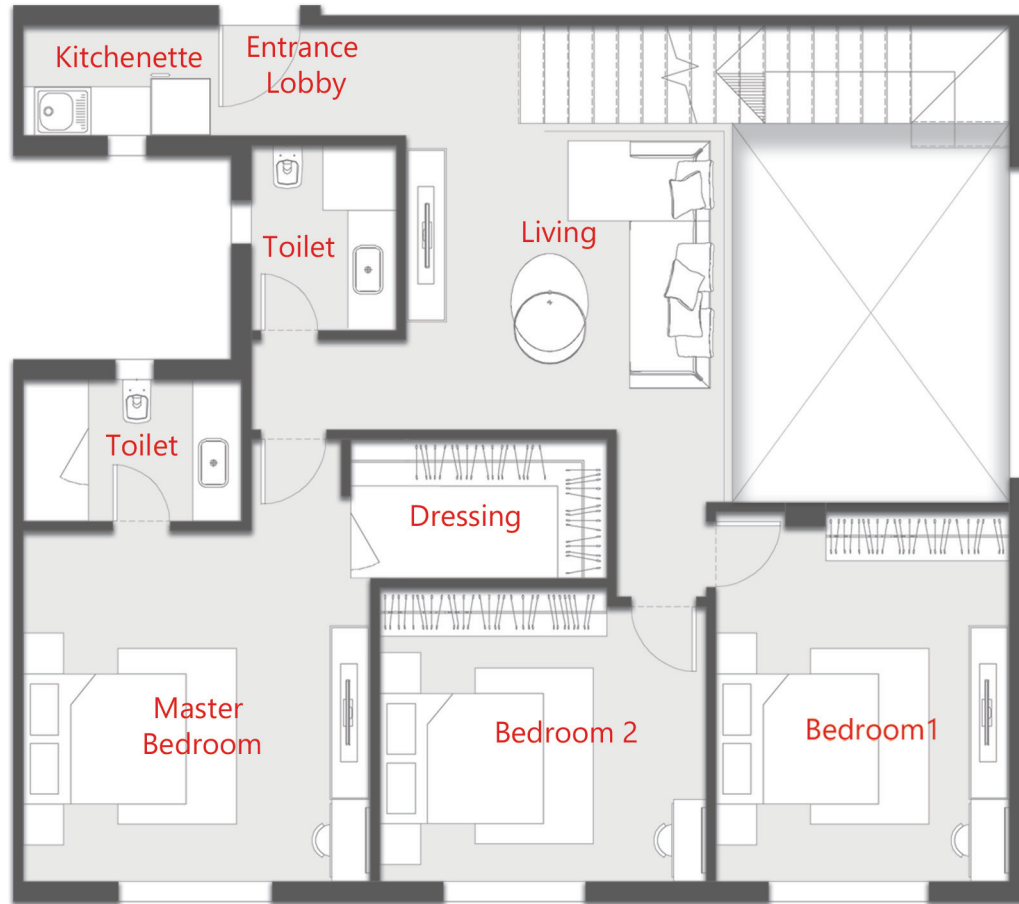
64M2



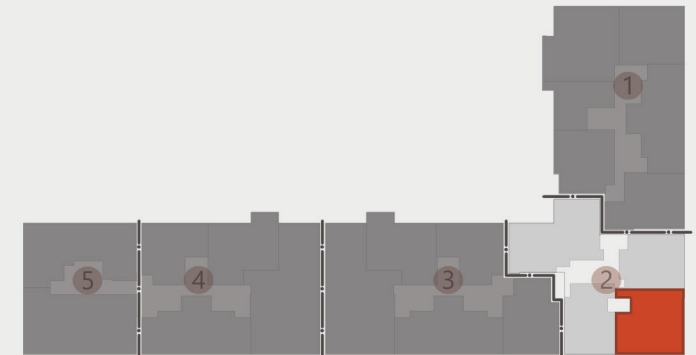
4TH FLOOR

299M2

PENTHOUSE-DUPLEX LEVEL 2



ROOM	DIMENSIONS
KITCHENETTE	2.40 X 1.35
INTERNAL LOBBY	3.90 X 3.60
MASTER BEDROOM	4.30 X 4.25
-DRESSING	2.90 X 1.70
-TOILET	2.70 X 1.75
TOILET	2.25 X 1.80
BEDROOM 1	4.55 X 3.60
BEDROOM 2	4.00 X 3.60
LIVING	3.60X3.90



5TH FLOOR

Disclaimer: Master plan, renders and floor plans are indicative and for illustrative purposes only.



Disclaimer: Master plan, renders and floor plans are indicative and for illustrative purposes only.



Disclaimer: Master plan, renders and floor plans are indicative and for illustrative purposes only.

15688
alkarmadevelopments.com

alkarmaTM
DEVELOPMENTS

EMIRATES
GLOBAL