



ALKARMA

KAY

WHERE LIFE REVOLVES

Alkarma Kay was inspired by the joy of life! Where you're at the heart of sheikh zayed city and surrounded by everything you would seek and more. we developed a modern boutique compound made up of two clusters on 18 acres of land with only %18 building space. Its 650 units are surrounded by %82 lush greenery and beautiful water features. A vast pool sits between both clusters inviting our trendsetting community to bond and get closer on long summer nights.

AlKarma Kay

Master Plan



2 residential clusters

Water features in every park

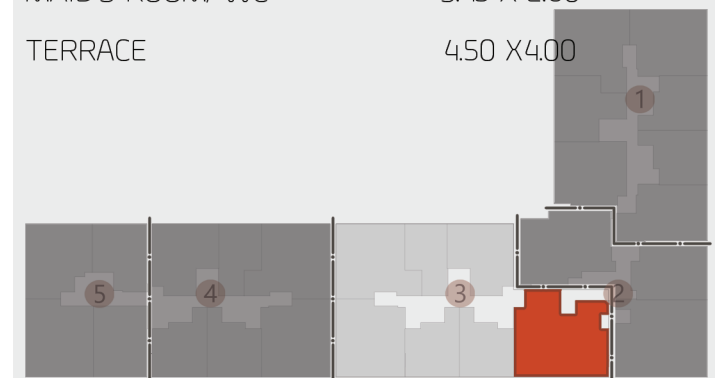
1 clubhouse

261 M2

4 BEDROOM



ROOM	DIMENSIONS
RECEPTION / DINING	12.00 X 4.25
KITCHEN	3.45 X 3.30
GUEST TOILET	2.60 X 1.50
LAUNDRY	2.75 X 0.70
MASTER BEDROOM	4.65 X 4.40
-DRESSING	3.75 X 3.30
-TOILET	3.05 X 3.00
TOILET	3.05 X 2.55
BEDROOM 1	4.40 X 3.30
DRESSING	4.50 X 1.70
BEDROOM 2	4.40 X 4.05
BEDROOM 3	4.40 X 3.65
MAID'S ROOM/ WC	3.45 X 2.60
TERRACE	4.50 X 4.00



2ND FLOOR

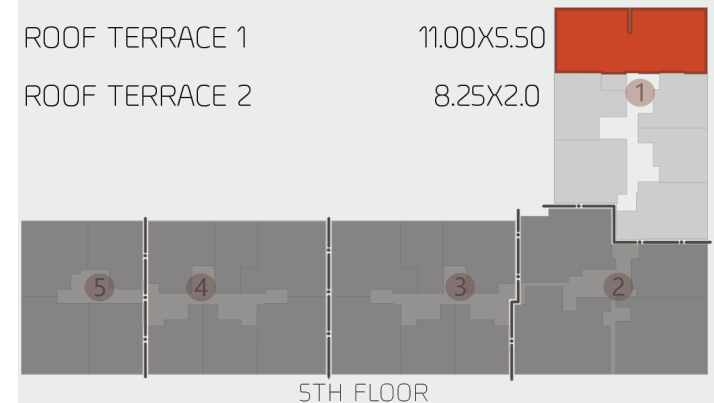
Disclaimer: Master plan, renders and floor plans are indicative and for illustrative purposes only.

242M2

PENT HOUSE-4 BEDROOM



ROOM	DIMENSIONS
RECEPTION / DINING	10.50 X (7.70/4.20)
KITCHEN	3.85 X 3.50
GUEST TOILET	1.60 X 1.40
INTERNAL LOBBY	3.40 X 2.15
MASTER BEDROOM	4.40 X 4.35
-DRESSING	2.60 X 2.10
-TOILET	3.20 X 1.75
TOILET	3.20 X (2.40 /1.50)
BEDROOM 1	4.00 X 3.40
BEDROOM 2	3.70 X 3.40
BEDROOM 3	3.70 X 3.40
MAID'S ROOM/ WC	2.80 X (2.80/1.90)
TERRACE	3.50 X 2.50
ROOF TERRACE 1	11.00X5.50
ROOF TERRACE 2	8.25X2.0



Disclaimer: Master plan, renders and floor plans are indicative and for illustrative purposes only.



Disclaimer: Master plan, renders and floor plans are indicative and for illustrative purposes only.



Disclaimer: Master plan, renders and floor plans are indicative and for illustrative purposes only.

15688
alkarmadevelopments.com

alkarma[™]
DEVELOPMENTS

EMIRATES
GLOBAL