



AlKarma Gates™

VILLA - TYPE 05



aikarma™
DEVELOPMENTS

MASTER PLAN



GATE
01

4200 M²
CLUBHOUSE

GATE
02



TOWN HOUSE



TWIN HOUSE



VILLA

**PARKING SPACES FOR
A STRESS-FREE JOURNEY
TO HOME**

**SPACIOUS STREETS &
FRIENDLY FAMILY
NEIGHBOURHOOD**

**2 GATES FOR FAST
EASY ACCESSIBILITY**



VILLA 05



TOTAL GROSS
AREA

414.75 M²

AVERAGE PLOT
AREA

650 - 830 M²

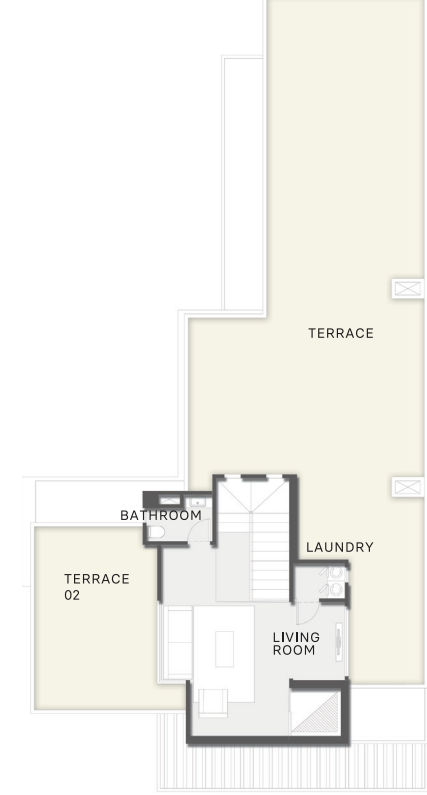
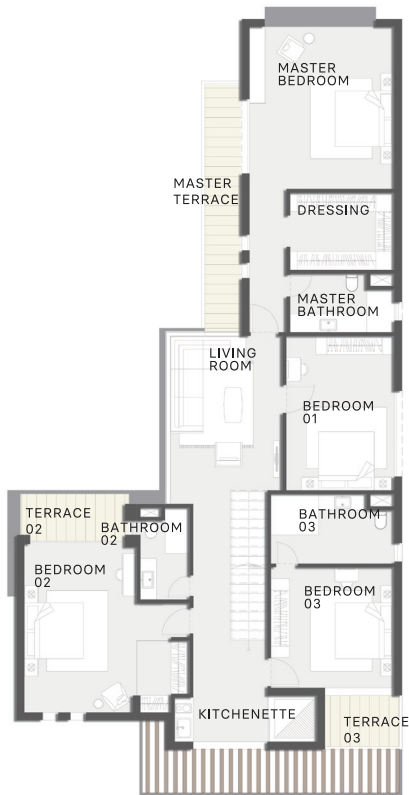


VILLA 05

GROUND FLOOR

RECEPTION	94	M ²
KITCHEN	4.7 x 4.6	M ²
GUEST TOILET	2.9 x 1.2	M ²
NANNY'S ROOM	3 x 2.9	M ²
ENTRANCE/LOBBY	3 x 3.15	M ²
TOTAL	165.25	M²





FIRST FLOOR

MASTER BEDROOM	4.7 x 5.25	M ²
DRESSING	2.5 x 3.4	M ²
MASTER BATHROOM	3.4 x 1.9	M ²
MASTER TERRACE	8 x 1.3	M ²
BEDROOM 01	5 x 3.5	M ²
LIVING ROOM	5.5 x 3.65	M ²
BEDROOM 02	5.55 x 5.35	M ²
BATHROOM 02	3 x 1.6	M ²
TERRACE 02	3.5 x 1.5	M ²
BEDROOM 03	3.9 x 4	M ²
BATHROOM 03	4 x 2.25	M ²
TERRACE 03	2.4 x 1.65	M ²
KITCHENETTE	1.4 x 3	M ²
TOTAL	192.25	M²

ROOF

TERRACE	106	M ²
LIVING ROOM	25	M ²
BATHROOM	2.1 x 1.5	M ²
TERRACE 02	22.7	M ²
LAUNDRY	1.1 x 1.65	M ²
TOTAL	44.5	M²





AlKarma Gates™

HOTLINE

15688

WEBSITE

WWW.ALKARMADEVELOPMENTS.COM

ADDRESS

ALKARMA 4 COMMERCIAL COMPLEX,
EL SHEIKH ZAYED, EGYPT

E-MAIL

GATES@ALKARMADEVELOPMENTS.COM
INFO@ALKARMADEVELOPMENTS.COM

alKarma™
DEVELOPMENTS