



# AlKarma Gates™

VILLA - TYPE 02



**aikarma™**  
DEVELOPMENTS

# MASTER PLAN



GATE  
02

GATE  
01

4200 M<sup>2</sup>  
CLUBHOUSE



TOWN HOUSE



TWIN HOUSE



VILLA

PARKING SPACES FOR  
A STRESS-FREE JOURNEY  
TO HOME

SPACIOUS STREETS &  
FRIENDLY FAMILY  
NEIGHBOURHOOD

2 GATES FOR FAST  
EASY ACCESSIBILITY



# VILLA 02



TOTAL GROSS  
AREA

**314.00 M<sup>2</sup>**

AVERAGE PLOT  
AREA

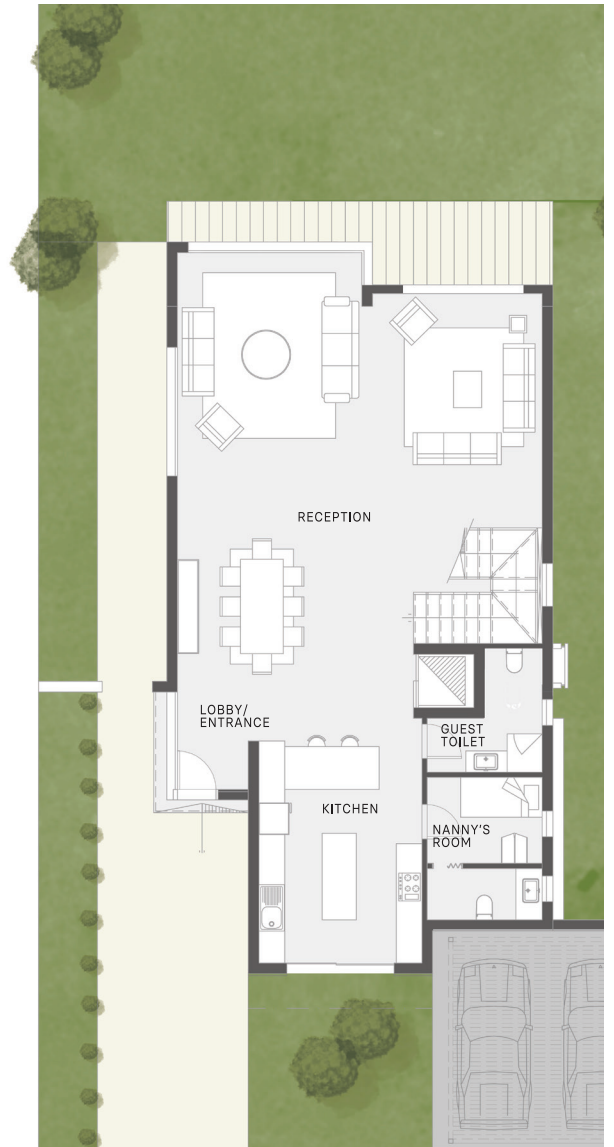
**450 - 550 M<sup>2</sup>**



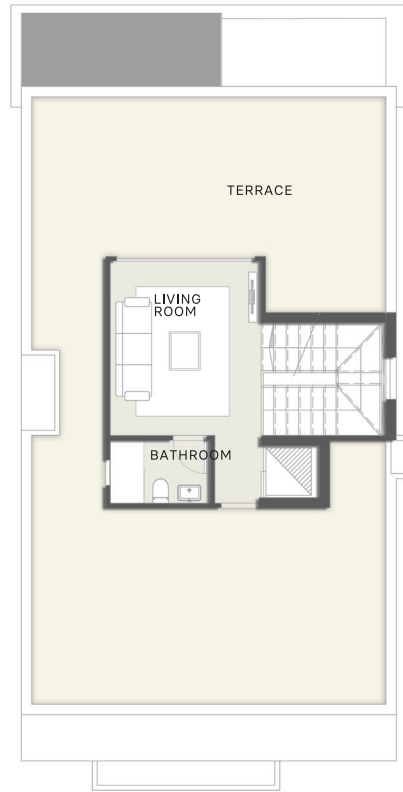
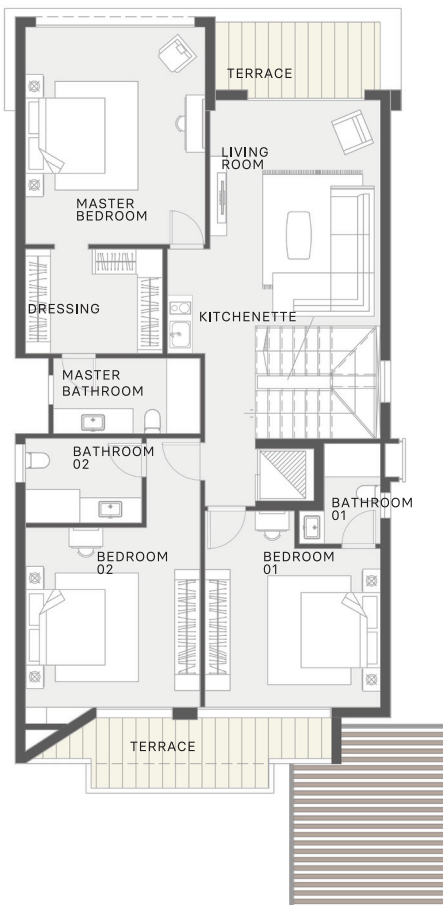
# VILLA 02

## GROUND FLOOR

RECEPTION	71	M <sup>2</sup>
KITCHEN	5 x 3.8	M <sup>2</sup>
GUEST TOILET	2.7 x 2.7	M <sup>2</sup>
NANNY'S ROOM	3.3 x 2.7	M <sup>2</sup>
ENTRANCE/LOBBY	2.1 x 1.7	M <sup>2</sup>
<b>TOTAL</b>	<b>135</b>	<b>M<sup>2</sup></b>







## FIRST FLOOR

MASTER BEDROOM	5.1 x 4.3	M <sup>2</sup>
DRESSING	3.3 x 2.4	M <sup>2</sup>
MASTER BATHROOM	3.5 x 1.7	M <sup>2</sup>
BEDROOM 01	4.2 x 3.8	M <sup>2</sup>
BATHROOM 01	2.2 x 1.95	M <sup>2</sup>
MAIN TERRACE	1.6 x 7	M <sup>2</sup>
BEDROOM 02	4.1 x 4.2	M <sup>2</sup>
BATHROOM 02	2.8 x 1.8	M <sup>2</sup>
LIVING ROOM	4.8 x 4.1	M <sup>2</sup>
LIVING TERRACE	4.45 x 1.95	M <sup>2</sup>
<b>TOTAL</b>	<b>145.25</b>	<b>M<sup>2</sup></b>

## ROOF

TERRACE	82.5	M <sup>2</sup>
LIVING ROOM	3.75 x 3.6	M <sup>2</sup>
BATHROOM	2.4 x 1.5	M <sup>2</sup>
<b>TOTAL</b>	<b>33.75</b>	<b>M<sup>2</sup></b>





# AlKarma Gates™

## HOTLINE

15688

## WEBSITE

[WWW.ALKARMADEVELOPMENTS.COM](http://WWW.ALKARMADEVELOPMENTS.COM)

## ADDRESS

ALKARMA 4 COMMERCIAL COMPLEX,  
EL SHEIKH ZAYED, EGYPT

## E-MAIL

[GATES@ALKARMADEVELOPMENTS.COM](mailto:GATES@ALKARMADEVELOPMENTS.COM)  
[INFO@ALKARMADEVELOPMENTS.COM](mailto:INFO@ALKARMADEVELOPMENTS.COM)

**alKarma™**  
DEVELOPMENTS