



# AlKarma Gates™

TOWN HOUSE - CORNER UNIT



**aikarma™**  
DEVELOPMENTS

# MASTER PLAN



GATE  
02

GATE  
01

4200 M<sup>2</sup>  
CLUBHOUSE



TOWN HOUSE



TWIN HOUSE



VILLA

PARKING SPACES FOR  
A STRESS-FREE JOURNEY  
TO HOME

SPACIOUS STREETS &  
FRIENDLY FAMILY  
NEIGHBOURHOOD

2 GATES FOR FAST  
EASY ACCESSIBILITY



# TOWNHOUSE CORNER UNIT



TOTAL GROSS  
AREA

**206.25 M<sup>2</sup>**

AVERAGE PLOT  
AREA

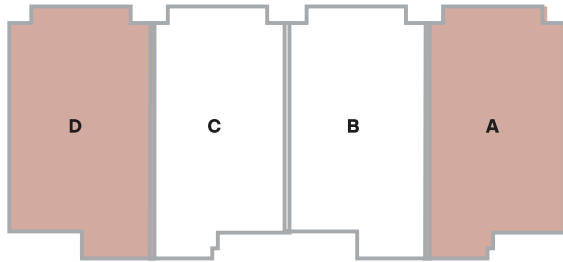
**295-340 M<sup>2</sup>**

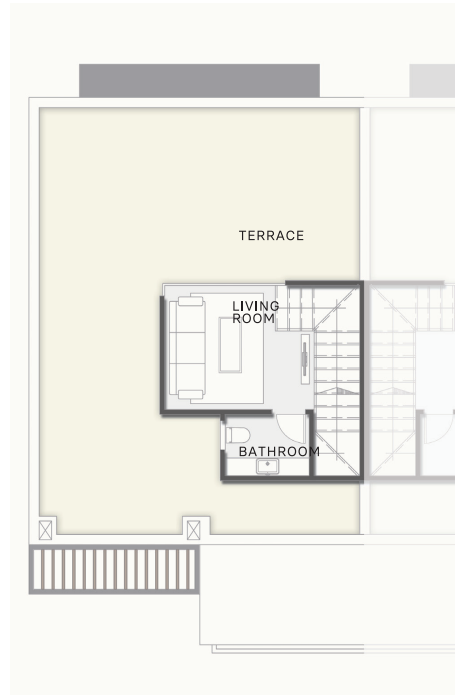
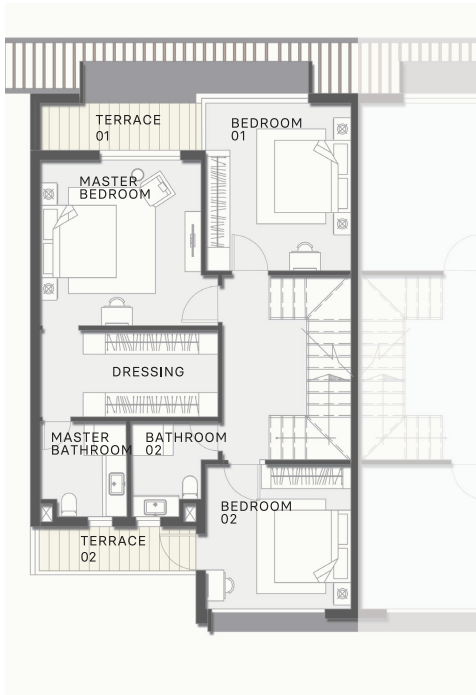


# TOWNHOUSE CORNER UNIT

## GROUND FLOOR

RECEPTION	58	M <sup>2</sup>
KITCHEN	3.7 x 4.3	M <sup>2</sup>
GUEST TOILET	1.6 x 1.3	M <sup>2</sup>
ENTRANCE/LOBBY	1.6 x 1.5	M <sup>2</sup>
<b>TOTAL</b>	<b>88.5</b>	<b>M<sup>2</sup></b>





## FIRST FLOOR

MASTER BEDROOM	4.1 x 4	M <sup>2</sup>
DRESSING	4.5 x 2.2	M <sup>2</sup>
MASTER BATHROOM	2.4 x 2.15	M <sup>2</sup>
BEDROOM 01	3.65 x 4.2	M <sup>2</sup>
TERRACE 01	1.2 x 4.1	M <sup>2</sup>
BEDROOM 02	3.6 x 3.6	M <sup>2</sup>
BATHROOM 02	2.4 x 2.2	M <sup>2</sup>
TERRACE 02	1.3 x 4.1	M <sup>2</sup>
<b>TOTAL</b>	<b>96.25</b>	<b>M<sup>2</sup></b>

## ROOF

TERRACE	59	M <sup>2</sup>
LIVING ROOM	3.6 x 3	M <sup>2</sup>
BATHROOM	2 x 1.5	M <sup>2</sup>
<b>TOTAL</b>	<b>21.5</b>	<b>M<sup>2</sup></b>





# AlKarma Gates™

## HOTLINE

15688

## WEBSITE

[WWW.ALKARMADEVELOPMENTS.COM](http://WWW.ALKARMADEVELOPMENTS.COM)

## ADDRESS

ALKARMA 4 COMMERCIAL COMPLEX,  
EL SHEIKH ZAYED, EGYPT

## E-MAIL

[GATES@ALKARMADEVELOPMENTS.COM](mailto:GATES@ALKARMADEVELOPMENTS.COM)  
[INFO@ALKARMADEVELOPMENTS.COM](mailto:INFO@ALKARMADEVELOPMENTS.COM)

**alKarma™**  
DEVELOPMENTS